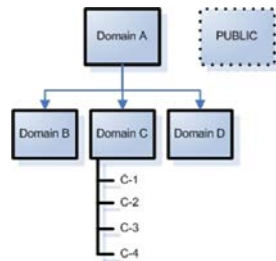


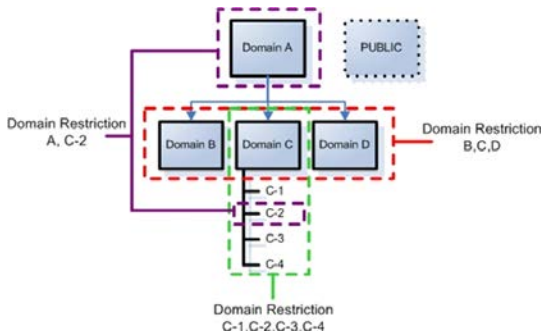
Log into SATERN at <https://saturn.nasa.gov>

## SATERN Domain Restrictions



**Domain Restrictions** specify the data location(s) where Admins can execute their assigned workflows. Domain Restrictions are records that contain one or many Domains.

Every workflow assigned to an Admin Role may be qualified by a Domain Restriction. If no, Domain Restriction is applied to a workflow, the workflow can be executed anywhere.



### Steps to Restricting Admin Workflows:

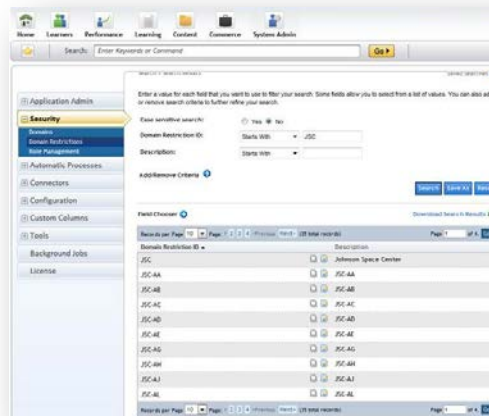
1. Create Domain Restriction record(s)
2. Create Admin Role and Assign Workflows
3. Assign Domain Restrictions to individual Workflows
4. Create Admin Account and Assign Admin Role

### Example Domain Restrictions:

**NASA:** Contains all Domains in the SATERN Domain Tree

**JSC:** Contains the JSC Domain and all sub-Domains of JSC

**Figure 1 - Sample Domain Restriction Record of JSC (Partial View of Domain Tab)**



**Figure 2 - Sample Admin Role JSC-TOA-3 (Partial List from Workflow Restriction Tab)**

